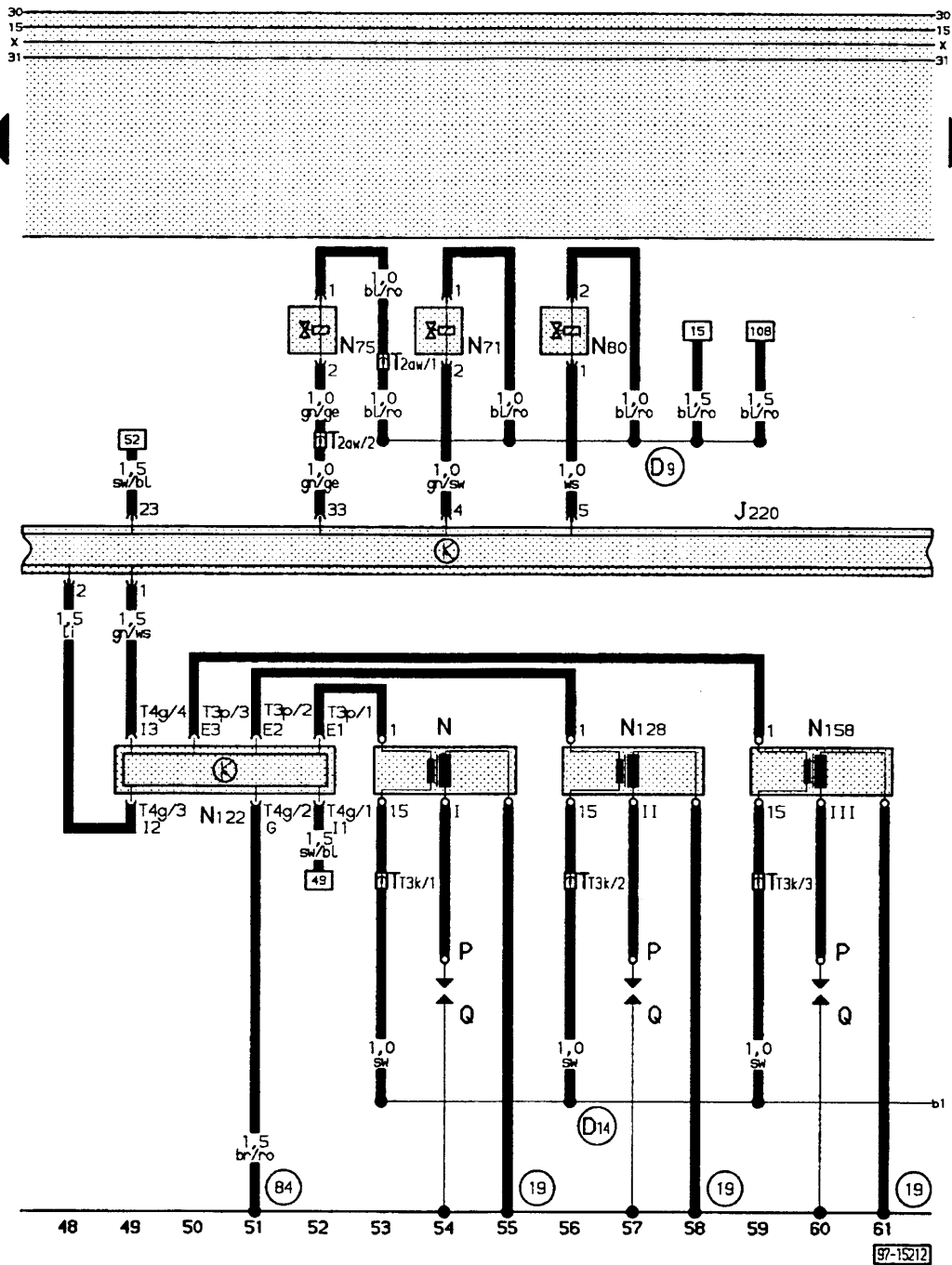


Electronic fuel injection, ignition



Wiring colours:

- bl = blue
- br = brown
- ge = yellow
- gn = green
- gr = grey
- li = purple
- ro = red
- sw = black
- ws = white

- J 220 – Control unit for Motronic
- N – Ignition coil
- N 71 – Idling speed stabilization valve
- N 75 – Solenoid valve for boost pressure control
- N 80 – Activated charcoal filter system solenoid valve I (pulsed)
- N 128 – Ignition coil 2
- N 158 – Ignition coil 3
- P – Spark plug connector
- Q – Spark plugs
- T 2aw – Connector 2 pin, in engine compartment, right
- T 3k – Connector 3 pin, white, for ignition coils
- T 3p – Connector 3 pin, for ignition end stage – ignition coils
- T 4g – Connector 4 pin, brown, for ignition end stage
- (19) – Earth point, near coil
- (84) – Earth connection, engine block, in front right wiring loom
- (D9) – Positive (+) connection (15) via fuse 27, in front right wiring loom
- (D14) – Connection (ignition coil – control unit), in front right wiring loom